

# **Competition and Stability- a New Perspective on the Microecology**

**PhD student: Ying, YANG**

**Supervisor: Professor Margaret IP**

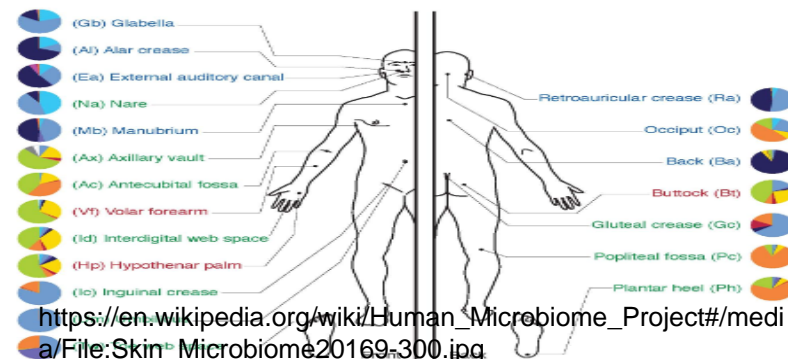
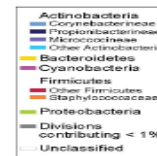
**Date: 15/ Dec./ 2015**

**Department: Microbiology, CUHK**

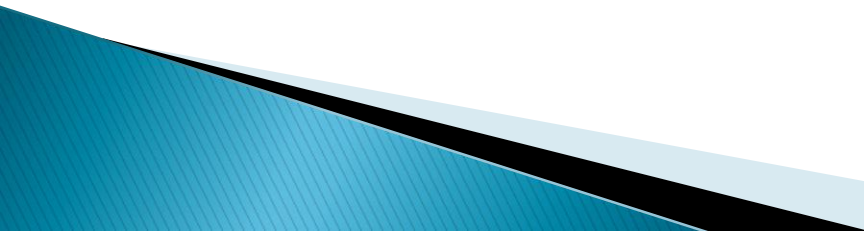


# The Ecology of the Microbiome

- ▶ The human microbiome contains hundreds of species and trillions of cells that reside predominantly in the gastrointestinal tract.
- ▶ Any one individual tends to carry the same key set of species for long periods, major shifts in microbial community composition are often associated with ill health.

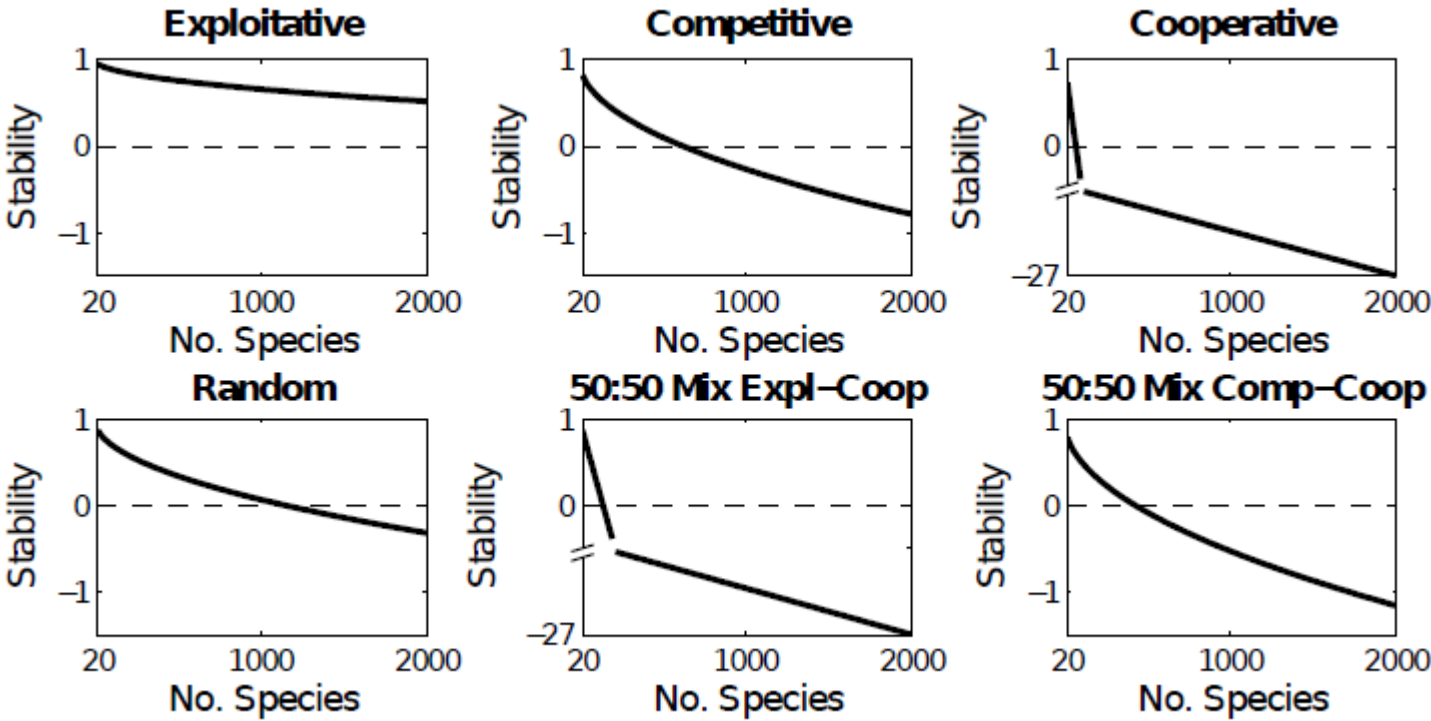


# The Ecology of the Microbiome

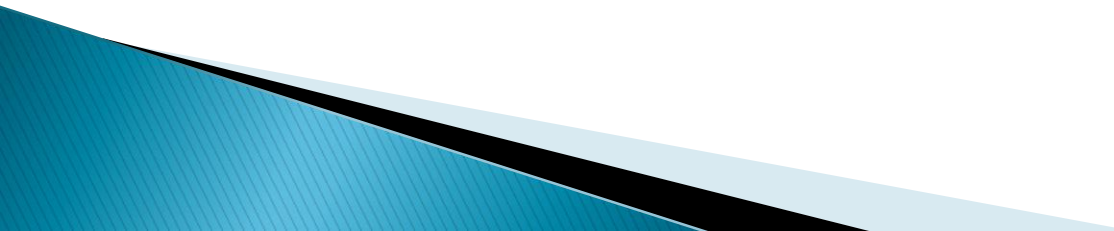
- ▶ What promotes or disrupts the stability of microbiome communities ?
  - ▶ Some progress has been made through the use of individual-based models and other analyses of two-species communities.
  - ▶ A long history of using network models that are specifically intended to deal with large and complex communities .
- 

# Diversity destabilizes communities

- ▶ Diversity -problematic for community stability.



# The Ecology of the Microbiome

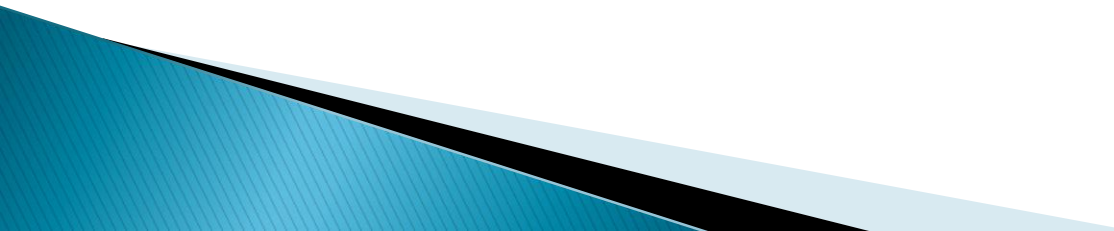
- ▶ The potential effects of cooperation or competition on the ecological stability of microbiome communities were neglected.
  - ▶ Three methods were established to understand ecological stability in the microbiome.
- 

# Method 1- Linear stability analysis

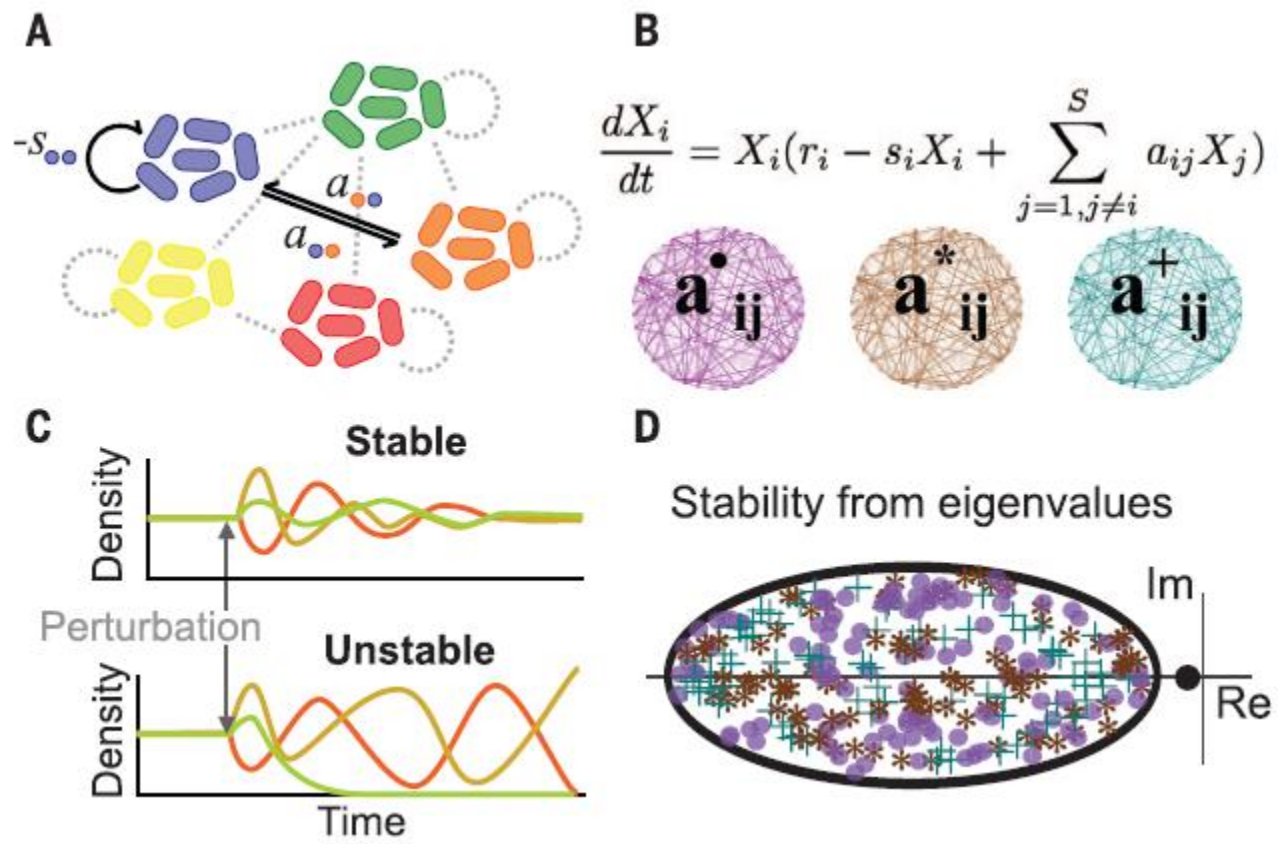
- ▶ Will a population return to this equilibrium following a perturbation?
- ▶ An approach that is well suited to the large population sizes of microbial species.
- ▶ Based upon calculating the eigenvalues of the Jacobian matrix of the dynamical system considered – a matrix that tells us how a change in the density of any of the species at equilibrium will affect the whole community.

# Method 1- Linear stability analysis

Stability is assessed from the network's eigenvalues, which give three measures of stability.

- ▶ (i) the probability that the community will return to its previous state after a small perturbation.
  - ▶ (ii) the population dynamics during this return.
  - ▶ (iii) how long the return will take, which is a form of resilience.
- 

# Method 1- Linear stability analysis



Coyte K Z, Schluter J, Foster K R. The ecology of the microbiome: Networks, competition, and stability[J]. Science, 2015, 350(6261): 663-666.



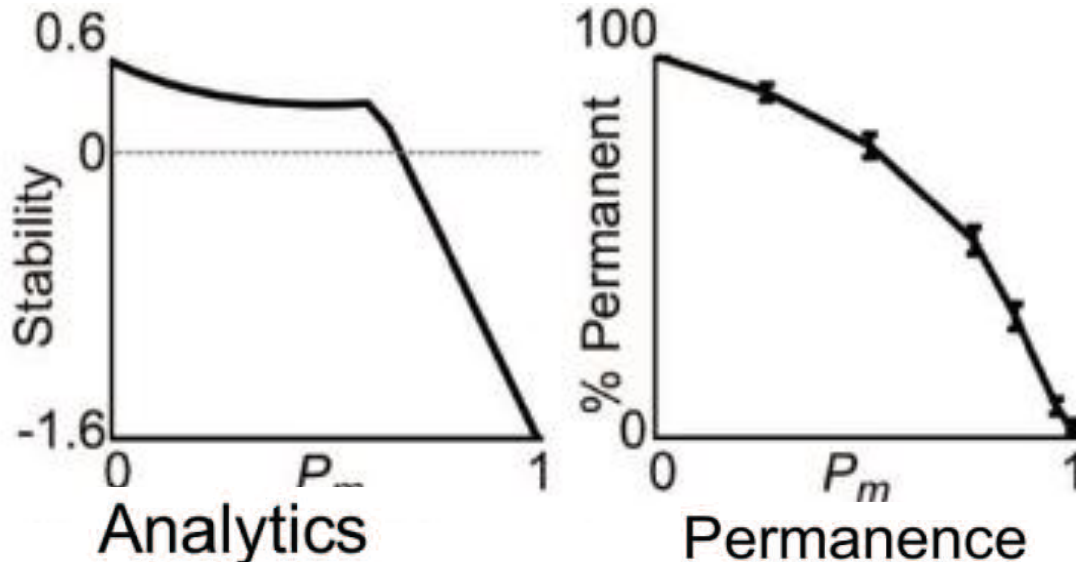
# Method 1- Linear stability analysis

- ▶ This approach is only able to analyze whether viable communities are stable when they are close to their equilibrium, it provides no information on how communities behave away from this equilibrium.

# Method 2- Permanence Analysis

whether a community will retain all its members, independent of the scale of any perturbation ?

The same prediction that cooperation is destabilizing



Coyte K Z, Schluter J, Foster K R. The ecology of the microbiome: Networks, competition, and stability[J]. Science, 2015, 350(6261): 663-666.

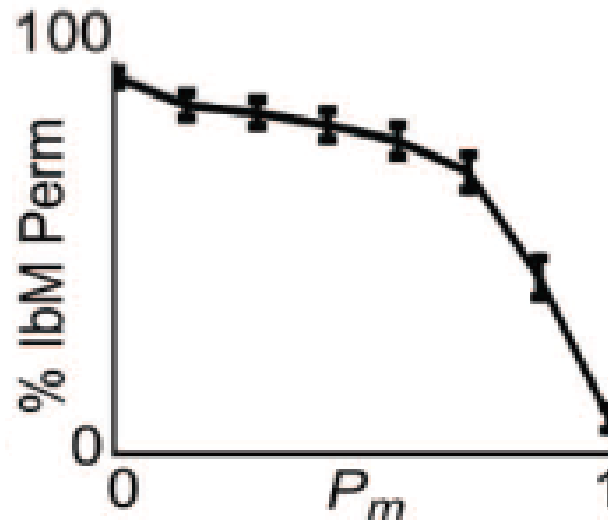
**The effect of cooperation on community stability**

## Method 2- Permanence analysis

Cons: positive feedbacks arising from cooperative interactions can still constrain this analysis, it may underestimate the number of permanent communities.

# Method 3- Individual-based model

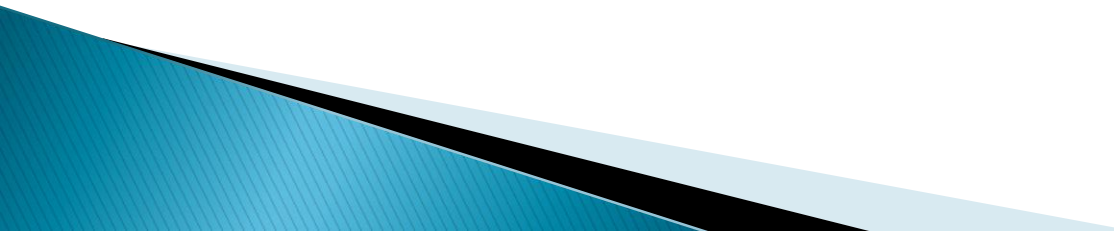
- ▶ Added information was given, such as how we expect a community to behave following perturbation.
- ▶
- ▶ Allows us to track population sizes of all species over time.



Coyte K Z, Schluter J, Foster K R. The ecology of the microbiome: Networks, competition, and stability[J]. Science, 2015, 350(6261): 663-666.

**The effect of cooperation on community stability**

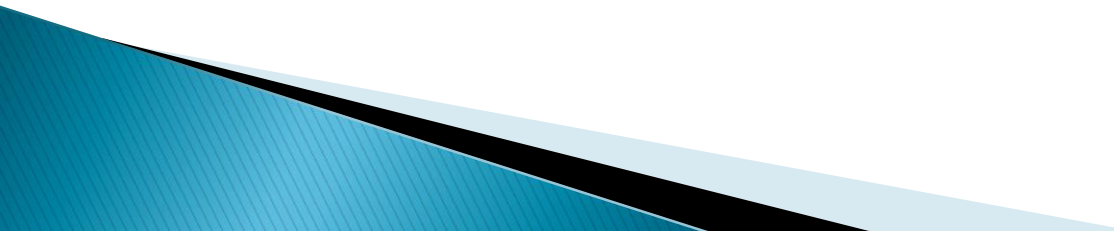
# A wide range of diversities of stabilizing effect

- ▶ Increasing species numbers is a destabilizing process, but the concurrent increase in competition introduces negative-feedback loops that have a stabilizing effect.
  - ▶ A wide range of diversities was found for which this stabilizing effect dominates the destabilizing effect of increased species numbers.
- 

# How a host should interact with its symbionts?

- ▶ Stabilizing effect of competition reflects the more general principle that dampening of positive-feedback loops promotes stability.

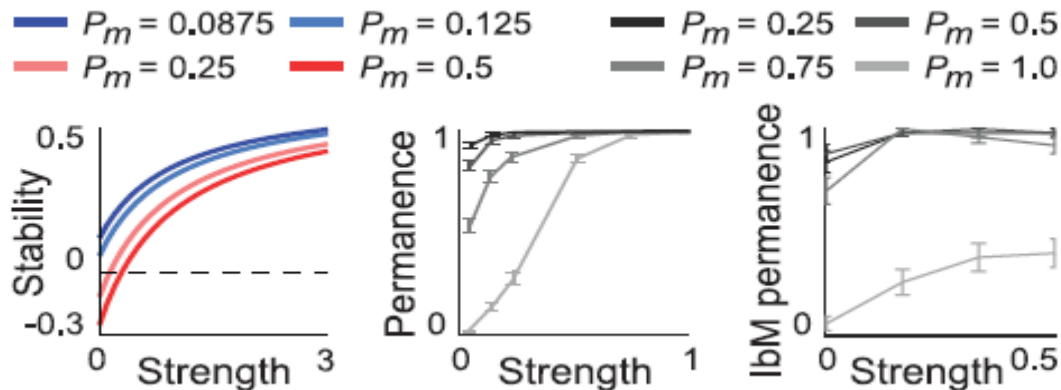
# How a host should interact with its symbionts?

- ▶ Immune system: During dysbiosis and infection, adaptive immunity is thought to help reestablish a healthy microbiome by suppressing species whose abundance is causing harm.
  - ▶ We can add such density-dependent regulation to the model and find that it is indeed stabilizing.
  - ▶ The reason is that immune regulation, like competition, will prevent run-away positive-feedback .
- 

# How a host should interact with its symbionts?

Redundancy can promote stability when a few strong cooperative interactions are replaced by several weaker ones.

## ▶ spatial structure



Coyte K Z, Schluter J, Foster K R. The ecology of the microbiome: Networks, competition, and stability[J]. Science, 2015, 350(6261): 663-666.

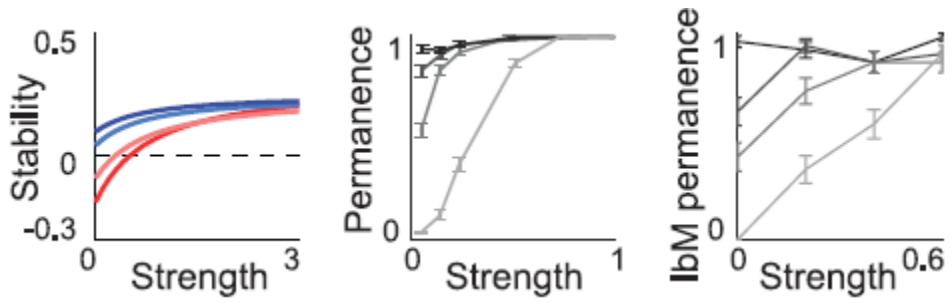
**Spatial structure promotes ecological stability**



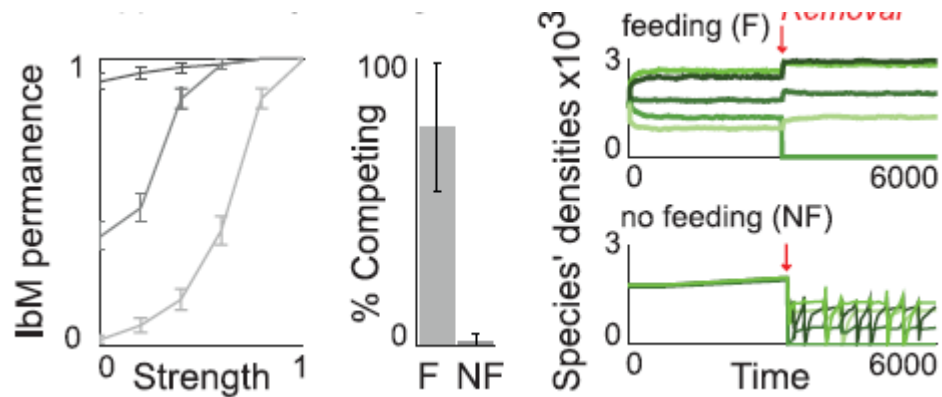
# How a host should interact with its symbionts?

## ▶ Host epithelial feeding

Targeted feeding



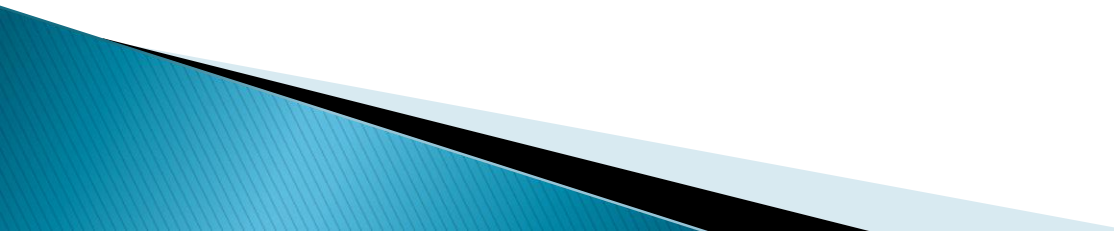
Supplementary feeding



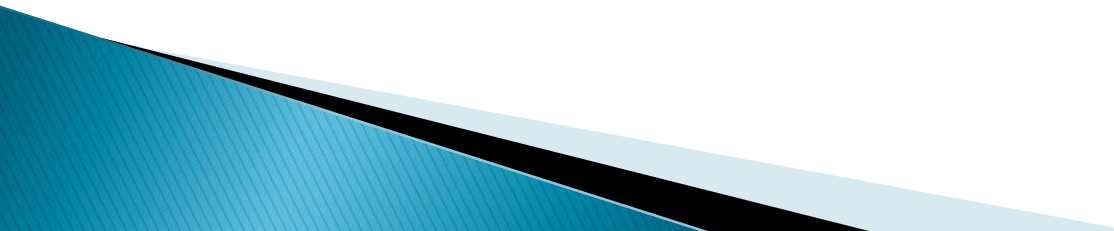
Coyte K Z, Schluter J, Foster K R. The ecology of the microbiome: Networks, competition, and stability[J]. Science, 2015, 350(6261): 663-666.

## Host strategies to promote ecological stability

# Experimental Validation

- ▶ A stable community within the microbiome will contain only a small proportion of destabilizing cooperative interactions, amongst a larger number of competitive or exploitative links.
  - ▶ A stable microbial community, the interactions between species should be predominantly weak relative to the self-regulation that each species experiences due to within-species competition.
- 

# Experimental Validation

- ▶ we can validate our approach and test our key predictions with recently published data on interactions in the mouse gut microbiome Stein et al. used time-resolved metagenomics and machine learning to infer the interactions within communities.  
we
- 

# Experimental Validation

OPEN ACCESS Freely available online

PLOS BIOLOGY

## The Evolution of Mutualism in Gut Microbiota Via Host Epithelial Selection

Jonas Schluter<sup>1,2\*</sup>, Kevin R. Foster<sup>1,2\*</sup>

**1** Department of Zoology, University of Oxford, Oxford, United Kingdom, **2** Oxford Centre for Integrative Systems Biology, University of Oxford, Oxford, United Kingdom

### Abstract

The human gut harbours a large and genetically diverse population of symbiotic microbes that both feed and protect the host. Evolutionary theory, however, predicts that such genetic diversity can destabilise mutualistic partnerships. How then can the mutualism of the human microbiota be explained? Here we develop an individual-based model of host-associated microbial communities. We first demonstrate the fundamental problem faced by a host: The presence of a genetically diverse microbiota leads to the dominance of the fastest growing microbes instead of the microbes that are most beneficial to the host. We next investigate the potential for host secretions to influence the microbiota. This reveals that the epithelium–microbiota interface acts as a selectivity amplifier: Modest amounts of moderately selective epithelial secretions cause a complete shift in the strains growing at the epithelial surface. This occurs because of the physical structure of the epithelium–microbiota interface: Epithelial secretions have effects that permeate upwards through the whole microbial community, while lumen compounds preferentially affect cells that are soon to slough off. Finally, our model predicts that while antimicrobial secretion can promote host epithelial selection, epithelial nutrient secretion will often be key to host selection. Our findings are consistent with a growing number of empirical papers that indicate an influence of host factors upon microbiota, including growth-promoting glycoconjugates. We argue that host selection is likely to be a key mechanism in the stabilisation of the mutualism between a host and its microbiota.

**Citation:** Schluter J, Foster KR (2012) The Evolution of Mutualism in Gut Microbiota Via Host Epithelial Selection. *PLoS Biol* 10(11): e1001424. doi:10.1371/journal.pbio.1001424

**Academic Editor:** Stephen P. Bliner, Cornell University, United States of America

**Received:** June 29, 2012; **Accepted:** October 10, 2012; **Published:** November 20, 2012

**Copyright:** © 2012 Schluter, Foster. This is an open-access article distributed under the terms of the Creative Commons Attribution License, which permits unrestricted use, distribution, and reproduction in any medium, provided the original author and source are credited.

**Funding:** This work was supported by European Research Council grant 242670 (<http://ec.europa.eu/>) and the EPSRC (<http://www.epsrc.ac.uk/>) through the Doctoral Training Centre Systems Biology, University of Oxford (<http://www.sysbiolodt.cox.ac.uk/>). The funders had no role in study design, data collection and analysis, decision to publish, or preparation of the manuscript.

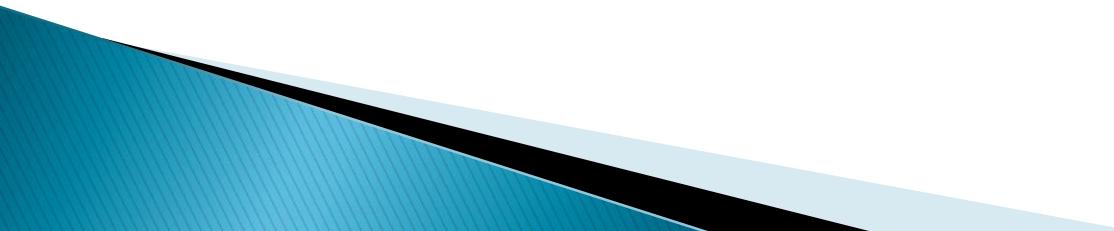
**Competing Interests:** The authors have declared that no competing interests exist.

**Abbreviations:** IgA, immunoglobulin A; ODE, ordinary differential equation

\* E-mail: [jonas.schluter@zoo.ox.ac.uk](mailto:jonas.schluter@zoo.ox.ac.uk) (JS); [kevin.foster@zoo.ox.ac.uk](mailto:kevin.foster@zoo.ox.ac.uk) (KRF)

Data were used to parameterize our general model and show that it correctly predicts stability within a real community.

# Conclusion

- ▶ Hosts can act as ecosystem engineers that manipulate general, system-wide properties of their microbial communities to their benefit.
  - ▶ To understand and manipulate the microbiome, we will need to dissect and engineer the interactions within these critical communities.
  - ▶ Synthetic Ecology.
- 

# References

- ▶ Coyte K Z, Schluter J, Foster K R. The ecology of the microbiome: Networks, competition, and stability[J]. *Science*, 2015, 350(6261): 663-666.
- ▶ Bäckhed F, Ley R E, Sonnenburg J L, et al. Host-bacterial mutualism in the human intestine[J]. *science*, 2005, 307(5717): 1915-1920.
- ▶ Schluter J, Foster K R. The evolution of mutualism in gut microbiota via host epithelial selection[J]. 2012.
- ▶ Bucci V, Bradde S, Biroli G, et al. Social interaction, noise and antibiotic-mediated switches in the intestinal microbiota[J]. *PLoS Comput Biol*, 2012, 8(4): e1002497-e1002497.
- ▶ Stein R R, Bucci V, Toussaint N C, et al. Ecological modeling from time-series inference: insight into dynamics and stability of intestinal microbiota[J]. 2013.
- ▶ May R M. Will a large complex system be stable?[J]. *Nature*, 1972, 238: 413-414.
- ▶ Van den Abbeele P, Van de Wiele T, Verstraete W, et al. The host selects mucosal and luminal associations of coevolved gut microorganisms: a novel concept[J]. *FEMS microbiology reviews*, 2011, 35(4): 681-704.
- ▶ Hofbauer J, Sigmund K. On the stabilizing effect of predators and competitors on ecological communities[J]. *Journal of mathematical biology*, 1989, 27(5): 537-548.

# References

- ▶ **Kashyap P C, Marcobal A, Ursell L K, et al. Genetically dictated change in host mucus carbohydrate landscape exerts a diet-dependent effect on the gut microbiota[J]. Proceedings of the National Academy of Sciences, 2013, 110(42): 17059-17064.**
- ▶ **Sanon A, Andrianjaka Z N, Prin Y, et al. Rhizosphere microbiota interferes with plant-plant interactions[J]. Plant and Soil, 2009, 321(1-2): 259-278.**
- ▶ **Nadell C D, Foster K R, Xavier J B. Emergence of spatial structure in cell groups and the evolution of cooperation[J]. PLoS Comput Biol, 2010, 6(3): e1000716-e1000716.**
- ▶ **Salzman N H, Hung K, Haribhai D, et al. Enteric defensins are essential regulators of intestinal microbial ecology[J]. Nature immunology, 2010, 11(1): 76-82.**
- ▶ **Stecher B, Hardt W D. The role of microbiota in infectious disease[J]. Trends in microbiology, 2008, 16(3): 107-114.**
- ▶ **Dethlefsen L, Relman D A. Incomplete recovery and individualized responses of the human distal gut microbiota to repeated antibiotic perturbation[J]. Proceedings of the National Academy of Sciences, 2011, 108(Supplement 1): 4554-4561.**
- ▶ **Hooper L V, Littman D R, Macpherson A J. Interactions between the microbiota and the immune system[J]. Science, 2012, 336(6086): 1268-1273.**
- ▶ **Khoruts A, Sadowsky M J. Therapeutic transplantation of the distal gut microbiota[J]. Mucosal immunology, 2011, 4(1): 4-7.**

**Thank you!**

